

NOTICE

Important: You must read the warning and conditions given on this label. If they are not acceptable, or if you are in doubt as to the proper handling of this product (including its transport, storage, use, disposal), and requirements for approved handlers, then return the unopened product to the supplier at once.

Warning: This product is subject to controls and could be hazardous if handled incorrectly. The user is responsible for ensuring that the handling of this product is in accordance with the law (including the **Hazardous Substances and New Organisms Act 1996**) and with the directions provided. Key Industries Limited declines all liability (whether in contract, tort (including but not limited to negligence), or otherwise) to the maximum extent permitted by law in relation to the handling of this product in a manner which is contrary to the directions given or to any applicable Acts, Regulations or Guidelines.

Further Information regarding the applicable Acts, Regulations and Guidelines for the proper handling of this product may be obtained by contacting EPA New Zealand (www.epa.gov.nz).

This product is warranted to contain the specified active ingredient within accepted analytical tolerance when packed.

CARBAMATE PESTICIDE, SOLID, TOXIC (80% bendiocarb)

CAS 22781-23-3

UN 2757 PG III HAZCHEM 2X

IN EMERGENCY ONLY PHONE 027474659



9 415840 822438

HAZARD CLASSIFICATIONS: 6.1B, 6.1C, 6.1D, 6.9A, 9.1A, 9.3A, 9.4A

**APPROVED HANDLER:**

This product must be secured or under the personal control of an approved handler when:

- Applied in a wide dispersive manner; or
- Used by a commercial contractor

TOXICITY WARNING: THIS SUBSTANCE MAY BE HARMFUL IF SWALLOWED OR ABSORBED THROUGH THE SKIN. Repeated minor exposures may have cumulative effects. Do not inhale the vapour or spray mist. Do not eat, drink or smoke while using. Remove protective clothing immediately after handling this product and wash hands and face before meals and after work.

MAY CAUSE ORGAN DAMAGE from repeated oral exposure at high doses.

MAY CAUSE SKIN AND EYE IRRITATION. Avoid contact with eyes and skin.

ECOTOXICITY:

VERY TOXIC TO AQUATIC ORGANISMS. DO NOT contaminate any water supply with chemical or empty container. DO NOT spray over or allow to drift over an aquatic environment.

TOXIC TO THE SOIL ENVIRONMENT.

VERY TOXIC TO TERRESTRIAL VERTEBRATES SUCH AS BIRDS AND REPTILES.

VERY TOXIC TO TERRESTRIAL INVERTEBRATES. Do not spray over bees or apply to plants in flower. Do not spray over beneficial predators.

FIRST AID

If swallowed do not induce vomiting. For advice contact the National Poisons Centre 0800 POISON (0800 764 766) or a doctor immediately. If splashed in eyes, flush eyes with water for at least 15 minutes and see a doctor. If inhaled, move victim to fresh air immediately. If breathing has stopped, begin artificial respiration. Use mouth-to-nose rather than mouth-to-mouth. If skin or hair contact occurs, remove contaminated clothing and flush skin and hair with running water.

Bendi 800 is a carbamate insecticide, which is a reversible cholinesterase inhibitor. Atropine, preferably by injection, is an antidote. Additionally, a benzodiazepine (e.g. diazepam) should be given in case of seizures/convulsions.

PEEL
HERE



WARNING • KEEP OUT OF REACH OF CHILDREN
Ecotoxic. Read safety directions before opening or using.



Key Industries

Protecting people, crops and native species

Bendi 800™

Insecticide

GENERAL INFORMATION

A non-repellent, residual spray for control of a wide range of insect pests in and around buildings.

ACTIVE INGREDIENT

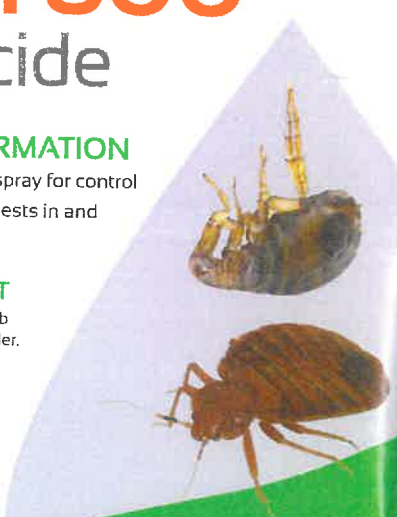
Contains 800g/kg bendiocarb in the form of a wettable powder.

Bendi 800™ is a trademark of Key Industries Ltd.



Distributed by
Key Industries Ltd
374NL, Casselation Drive
PO Box 65, 070, Manukau Bay, Auckland 0754
Tel: 09 917 1791 Fax: 09 917 1793
Web: www.keyindustries.co.nz Email: sales@keyindustries.co.nz

200GM



Notes:

1. Remove animals and pets from buildings or other areas to be treated before spraying.
2. Cover or remove any open food and water containers, including fish tanks before spraying.
3. Bendi 800 Insecticide was non-staining to all tested surfaces, including carpets, fabric furnishings, tiles, wallpapers, paints and timber surfaces, that were unmarked by water alone. If in any doubt, test a small inconspicuous area before widespread application.
4. Avoid direct application to polished brass or copper; if inadvertently sprayed, wipe clean to avoid tarnishing. Do not spray polycarbonate surfaces/ roof sheeting as solvent may cause etching.
5. DO NOT use on vegetation for consumption by humans or animals
6. DO NOT allow contact with mattresses, bedclothes or clothing
7. If spilled inside a building, wipe contaminated surfaces with a 10% dilute solution of bleach (sodium hypochlorite). Carpets should be shampooed.

STORAGE AND DISPOSAL

Store in the closed, original container in a cool, well-ventilated area. Do not store for prolonged periods in direct sunlight.

Triple rinse empty container and add rinsate to spray tank. If recycling, replace lid and return clean containers to recycler or designated collection point. Otherwise, crush or puncture and bury in a suitably approved landfill. Do not burn empty container

Dispose of this product only by using as a spray application according to the label instructions, or treat by adding a highly alkaline material such as lime or bleach, then dispose of safely in a managed landfill. Do not burn the product.

Dispose of equipment cleaning water onto ground away from susceptible crops and plants.

2

DIRECTIONS FOR USE: Domestic, Commercial and Farm Buildings, etc.

BENDI 800 should be diluted with water for application with hand or power operated sprayers. Wash out sprayers containing oily residues with water and Tank Clean R before use. When using hand sprayers, fill with the desired volume of water, add BENDI 800, close and shake or stir thoroughly before use. Shake or re-agitate sprayer before use if spraying is interrupted.

Bendi 800 Insecticide controls crawling insects in and around buildings including houses, food factories, stores, hotels, restaurants, hospitals, schools, vehicles and ships. Apply as a low-pressure spray, to a point before run off. Spray cracks and crevices, harbourages, trails, nesting areas and other places where pests may occur.

Five litres of spray should treat 100m² to 200m². Absorbent surfaces require higher rates.

Re-treat 6 - 8 weeks later, or when pests re-appear.

Warning: Dwellings must be well ventilated after treatment for up to 30 minutes. Ensure treatment is dry before re-entry is allowed.

SAFETY DATA SHEET

Additional information is listed in the Safety Data Sheet.

EXCLUSION OF LIABILITY

This product must be used strictly as directed, and in accordance with all instructions appearing on the label and in other reference material. So far as it is lawfully able to do so, Key Industries Ltd accepts no liability or responsibility for loss or damage arising from failure to follow such directions and instructions.

MPI Approved type B (all animal products except dairy)

AsureQuality approved Category C Food/beverage/ dairy factory and storage areas (Category B point apply)

EPA approved HSRO00451

3

SITUATION	PEST	RATE
Food processing factories, restaurants, laundries, food stores, ships, hospitals, kitchens, boiler houses, private dwellings, canteens, hotel-motels, in and around farm buildings	Ants	15g per 100m ² applied in 2.5L water
	Bed Bugs	
	Carpet beetles	
	Cockroaches (German, Oriental, American, Australian, smoky brown, New Zealand native cockroaches)	
	Fleas	
	Spiders, silverfish	
	Wasp nests	

CRITICAL COMMENTS

For all pests, use the higher rate for longer residual control or when heavy infestations occur or when conditions are unhygienic.

Spray in and around nests, runs and forage areas

Spray bed frames and cracks and crevices in adjacent walls and floor areas but NOT mattress or bedding.

Spray lightly on infested carpets, particularly edges of fitted carpets

Spray hiding, runway and scavenging areas

Spray floor surfaces likely to be infested including sleeping areas of dogs and cats but NOT on the animals.

Spray likely breeding places outside and under buildings, animal resting places and beds. Replace bedding with fresh clean covers.

Spray around all doors and windows and places where these pests enter the premises and wherever they are found.

Spray between 1 and 2 L of mixture per nest, depending on size. Spray must be injected into all openings of the nest. Larger nests may need to be broken down to obtain good coverage. Treat at night whenever possible.

Operators should wear clothing protective against the wasp including long-sleeved overalls buttoned at wrist and throat, gloves, hat and bee-veil.

SITUATION	PEST	RATE
Walls, ceilings, fences, yards, animal houses, abattoirs, garbage containers and dumps, manure heaps, or other places where flies rest or breed.	Flies (common housefly, stable fly, brown blowfly, European green blowfly, lesser housefly)	15g plus 50 g sugar per 5L water
Turf: Golf greens and fairways, bowling greens and playing fields	Black Beetle (<i>Heteronychus</i> spp.)	1.3 -1.8kg per ha or 13 - 18g per 100 m ²

CRITICAL COMMENTS

Apply as a bait to all surfaces where flies may contact the spray deposits. The sugar encourages flies to stay longer on treated surfaces. Direct treatment mainly against adult flies, although treated larvae are killed.

Apply in sufficient water to give uniform coverage (minimum 10 L per 100 m²). Apply when adult beetles are present (September - November). Use the higher rate on sandy soils or in areas of heavy infestation.

HANDLING PRECAUTIONS

STORAGE: Store in the original container tightly closed and in a locked, dry, cool and well ventilation area – well away from ignition sources and foodstuffs. Storage must be generally in accordance with NZS8409.

PERSONAL PROTECTION

When mixing or applying, wear eye protection, chemical resistant gloves (e.g. PVC or neoprene), chemical resistant boots, waterproof hat and cotton overalls buttoned to the neck and wrist. Wear a full face or half-faced respirator with a combination particle and organic vapour cartridge filter when mixing or applying Bendi 800.

SPILLAGE

Extinguish all ignition sources, exclude all bystanders, and prevent material entering waterways and coming into contact with Class 1, 2, 3, 4 or 5 substances. Wear appropriate protective clothing to clean up spills. Absorb spills with an inert (such as vermiculite, earth, sand or synthetic absorbent substance) material and place in waste containers. Wash area with a bleach solution (sodium hypochlorite) then absorb any remaining liquid with further inert material. Dispose of waste in an approved landfill.

IMPORTANT:

Do not apply to surfaces where edible products are processed, packed or stored. Do not use on surfaces where food-packaging materials (cartons, liners etc) are stored or assembled. Do not use near air vents or ducts in food stores or processing plants while they are in operation.