

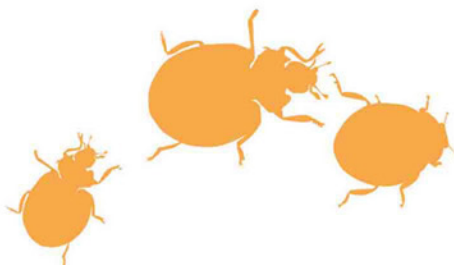
Xlure M.S.T.

MULTI SPECIES TRAP FOR MONITORING STORED PRODUCT BEETLES

1

360 Degree Entrance

The Xlure-M.S.T. replicates crack-like harbourages which attract stored product beetles. It also boasts a 360 degree entrance ensuring easy access for insects, therefore increasing trapping potential



3

Multiple Release Systems

The Xlure-M.S.T. ensures that the attractants are released for the full 6-8 weeks by having four different release systems for each attractant

2

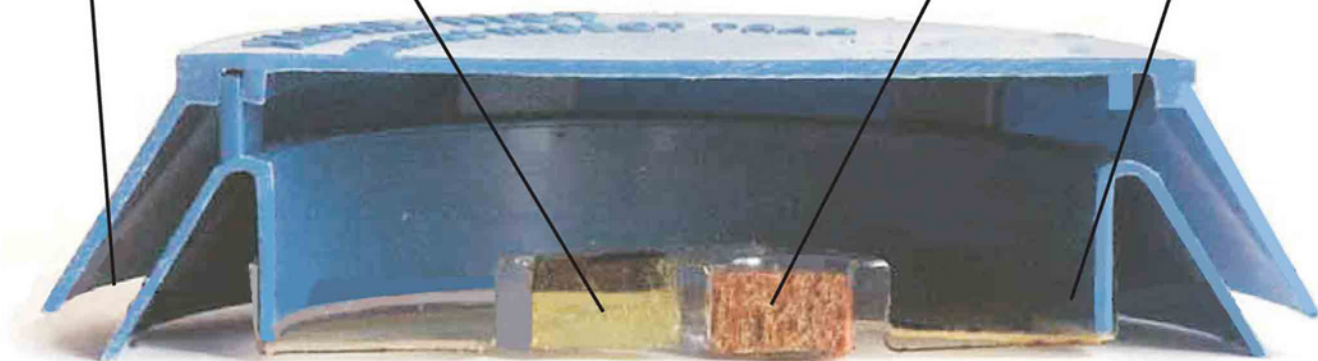
Beetle-Specific Pheromones

The Xlure-M.S.T. has 2 different Pheromones for key species such as the Flour Beetles, Khapra Beetles and Tobacco Beetles

4

Specialist Food Lures

The Xlure-M.S.T. has 3 Specialist Food Attractants. It offers insects the special "Carob Jam" lure developed by the Central Science Laboratories in York, plus Wheatgerm Oil



Xlure M.S.T.

- Monitoring traps for stored product crawling insects, beetles and weevils.
- Contains two pheromones and three food attractants.
- Suitable for various situations including very dusty conditions.
- A powerful Multi Species Trap for monitoring beetles and weevils in its vicinity.

Xlure M.S.T. Instructions & Placement

Applicable Anywhere

The Xlure-M.S.T. can attract and trap stored product beetles wherever they are suspected.

In Domestic properties where food and bread is stored. In Retail Stores that handle any dried food. (ie: pet stores).

In Food Factories particularly where raw materials are stored, and any other premises which are prone to infestation from stored product beetles.

The M.S.T. is supplied in handy-sized kits, comprising five reusable traps and together with five Xlure cartridges.



1
Peel the foil cover from the Xlure Cartridge



2
Push the Xlure Cartridge onto the base of the trap



3
Place the trap in position (it even works on the most dusty surfaces)



4
Remove and inspect within 8 weeks. Replace with new cartridge



Xlure M.S.T.

Xlure-M.S.T. is capable of monitoring the following insect pests:

Biscuit Beetle	Stegobium paniceum
Cigarette Beetle	Lasioderma serricorne
Confused Flour Beetle	Tribolium confusum
Rust-red Flour Beetle	Tribolium castaneum
Merchant Grain Beetle	Oryzaephilus mercator
Saw-toothed Grain Beetle	Oryzaephilus surinamensis
Flat Grain Beetle	Cryptolestes ferrugineus
Grain Weevil	Sitophilus granarius
Rice Weevil	Sitophilus oryzae
Flour Mite	Acarus siro
Khapra	Trogoderma granarium

Xlure-M.S.T. Placement

- Insects monitored by the Xlure-M.S.T. usually do not travel far from their colony.
- The starting placement point should be a machinery or commodity location or any potential insect infestation hot spot.
- Subsequent traps should be located in other potential hot spots within 10 metres of the first trap.
- Traps placed evenly in a grid formation will ensure the premises are well protected.